



10 Key Components of Therapeutic Courts

Adam Pithan
Washington State Therapeutic Court Coordinator
October 16, 2025

Announcements:

- Best Practice Book Club
 - November 21st, 12:00 noon: Complementary Services and Recovery Capital.

Announcements:

- Best Practice Book Club
 - November 21st, 12:00 noon: Complementary Services and Recovery Capital.
 - December 19th, 12:00 noon: Roles and Responsibilities of the Judge

Announcements:

- Best Practice Book Club
 - November 21st, 12:00 noon: Complementary Services and Recovery Capital.
 - December 19th, 12:00 noon: Roles and Responsibilities of the Judge
- Recovery Capital Training – December?

Announcements:

- Best Practice Book Club
 - November 21st, 12:00 noon: Complementary Services and Recovery Capital.
 - December 19th, 12:00 noon: Roles and Responsibilities of the Judge
- Recovery Capital Training – December?
- Quarterly Coordinator's Meeting – January, April, July, October
 - All Therapeutic Court Coordinators, Managers, and Case Managers from Superior, District, and Municipal Courts!

Announcements:

- Best Practice Book Club
 - November 21st, 12:00 noon: Complementary Services and Recovery Capital.
 - December 19th, 12:00 noon: Roles and Responsibilities of the Judge
- Recovery Capital Training – December?
- Quarterly Coordinator's Meeting – January, April, July, October
 - All Therapeutic Court Coordinators, Managers, and Case Managers from Superior, District, and Municipal Courts!
- Problem Solving Court Coordinators Listserv (and others)

A Few Things to Note:

- Broad Application to All Courts

A Few Things to Note:

- Broad Application to All Courts
- May be some components that don't 100% fit for some court types.

A Few Things to Note:

- Broad Application to All Courts
- May be some components that don't 100% fit for some court types.
- Focus on the similarities rather than the differences.

A Few Things to Note:

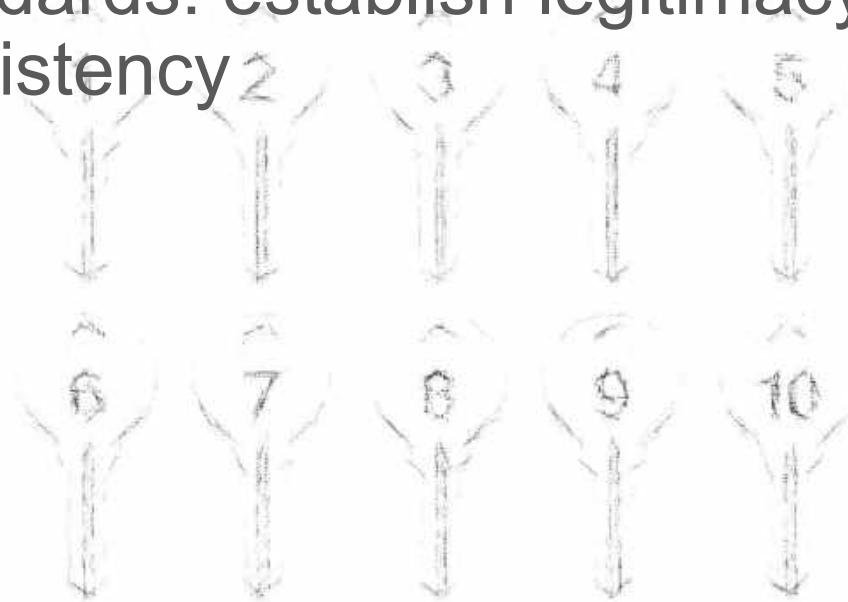
- Broad Application to All Courts
- May be some components that don't 100% fit for some court types.
- Focus on the similarities rather than the differences.
- It is good to recognize areas your court could improve upon.

Why do the 10 Key Component s Matter?



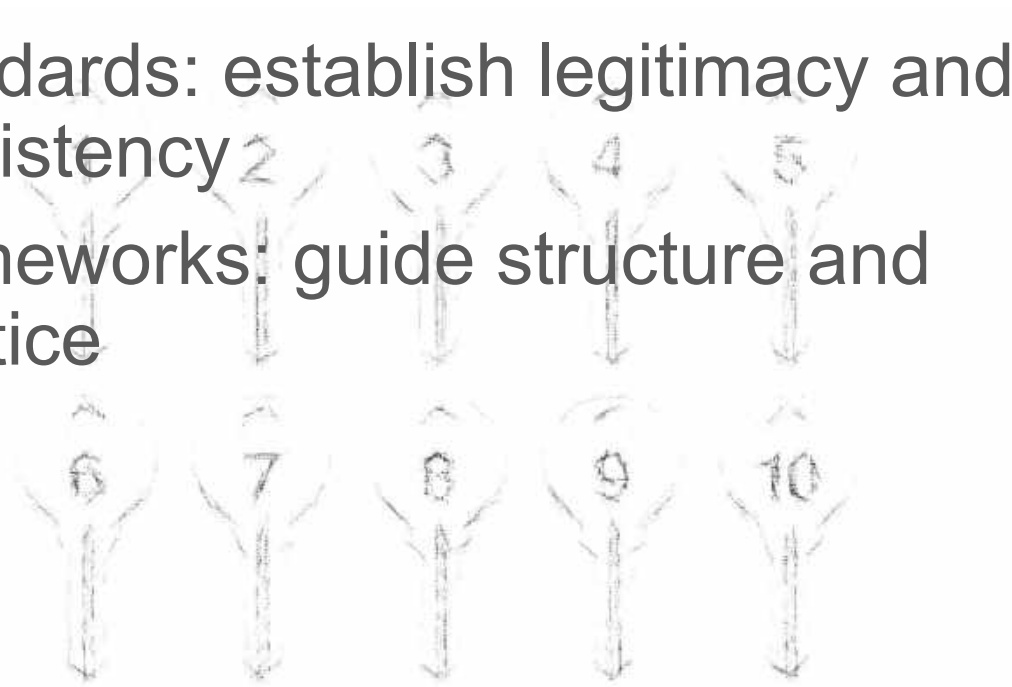
Why do the 10 Key Components Matter?

- Standards: establish legitimacy and consistency



Why do the 10 Key Components Matter?

- Standards: establish legitimacy and consistency
- Frameworks: guide structure and practice



Why do the 10 Key Components Matter?

- Standards: establish legitimacy and consistency
- Frameworks: guide structure and practice
- Evaluation: used nationally for measuring effectiveness

Why do the 10 Key Components Matter?

- Standards: establish legitimacy and consistency
- Frameworks: guide structure and practice
- Evaluation: used nationally for measuring effectiveness
- Fidelity → Consistency → Outcomes

The 10 Key Components

Break down into three Subgroups:

The 10 Key Components

Break down into three Subgroups:

- Subgroup 1: The Foundation (Components 1-3)



The 10 Key Components

Break down into three Subgroups:

- Subgroup 1: The Foundation (Components 1-3)
- Subgroup 2: The Structure (Components 4-7)



The 10 Key Components

Break down into three Subgroups:

- Subgroup 1: The Foundation (Components 1-3)
- Subgroup 2: The Structure (Components 4-7)
- Subgroup 3: Sustainability (Components 8-10)

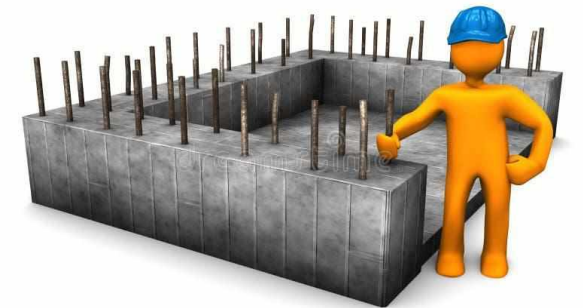


The Foundation



The Foundation

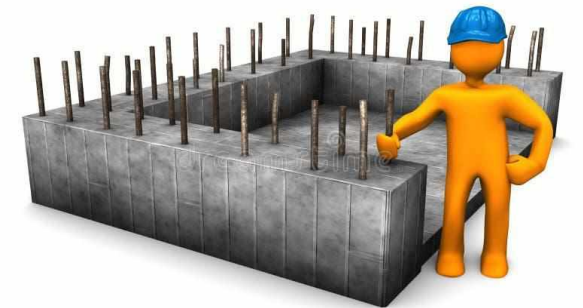
-  1. Courts integrate alcohol, drug, and other treatment services with justice system case processing.



The Foundation



1. Courts integrate alcohol, drug, and other treatment services with justice system case processing.
 - Unified Mission

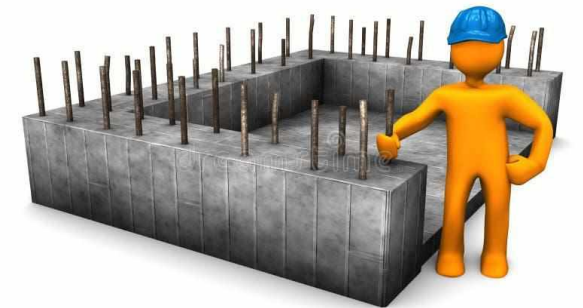


The Foundation



1. **Courts integrate alcohol, drug, and other treatment services with justice system case processing.**

- Unified Mission
- **Structured Process**

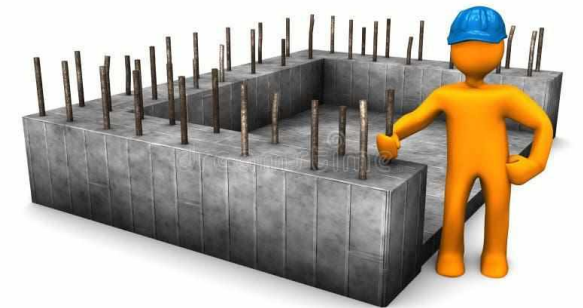


The Foundation





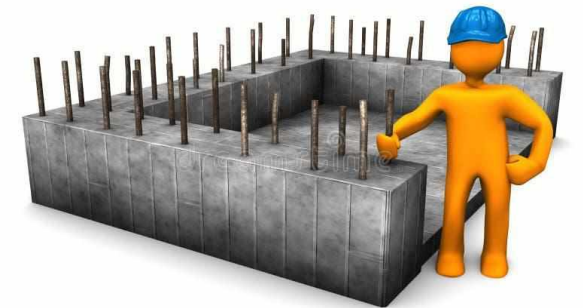
1. **Courts integrate alcohol, drug, and other treatment services with justice system case processing.**

- Unified Mission
- Structured Process
- **Active Oversight**





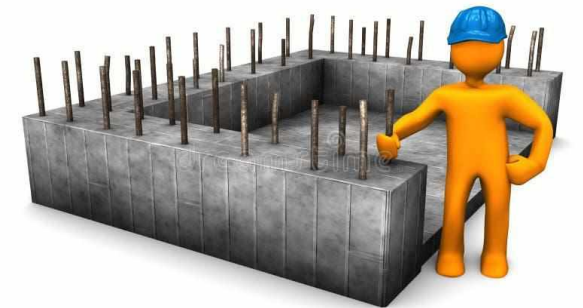
The Foundation

-  1. Courts integrate alcohol, drug, and other treatment services with justice system case processing.
-  2. **Using a non-adversarial approach, prosecution and defense counsel promote public safety while protecting participants' due process rights.**





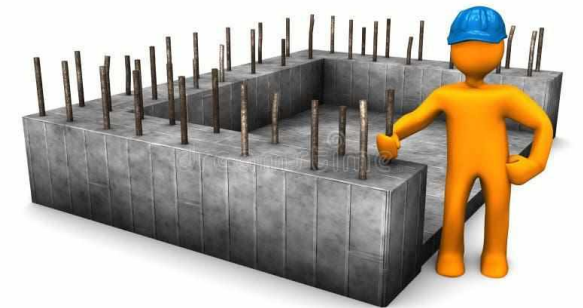
The Foundation

-  1. Courts integrate alcohol, drug, and other treatment services with justice system case processing.
-  2. **Using a non-adversarial approach, prosecution and defense counsel promote public safety while protecting participants' due process rights.**
 - **Team-Based, Non-adversarial Approach**





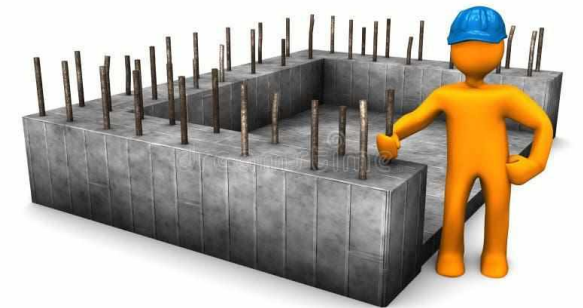
The Foundation

-  1. Courts integrate alcohol, drug, and other treatment services with justice system case processing.
-  2. **Using a non-adversarial approach, prosecution and defense counsel promote public safety while protecting participants' due process rights.**
 - Team-Based, Non-adversarial Approach
 - **Defined Responsibilities**






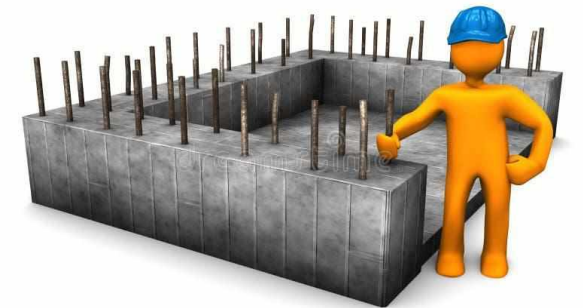
The Foundation

-  1. Courts integrate alcohol, drug, and other treatment services with justice system case processing.
-  2. **Using a non-adversarial approach, prosecution and defense counsel promote public safety while protecting participants' due process rights.**
 - Team-Based, Non-adversarial Approach
 - Defined Responsibilities
 - **Consistency & Collaboration**



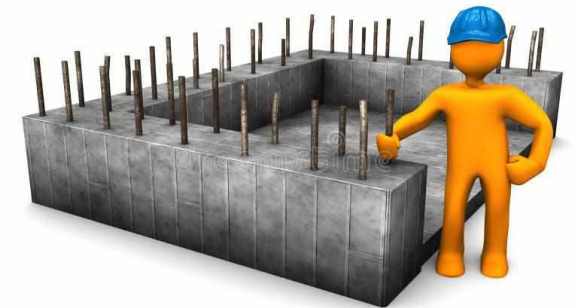
The Foundation

-  1. Courts integrate alcohol, drug, and other treatment services with justice system case processing.
-  2. Using a non-adversarial approach, prosecution and defense counsel promote public safety while protecting participants' due process rights.
-  3. **Eligible participants are identified early and promptly placed in the therapeutic court program.**



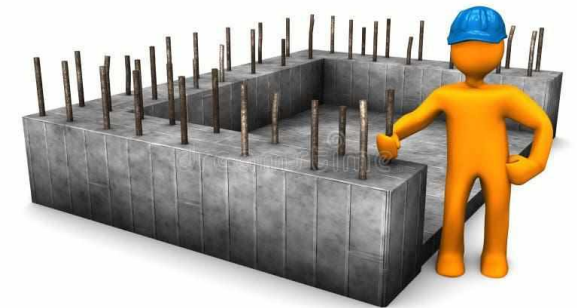
The Foundation

1. Courts integrate alcohol, drug, and other treatment services with justice system case processing.
2. Using a non-adversarial approach, prosecution and defense counsel promote public safety while protecting participants' due process rights.
3. **Eligible participants are identified early and promptly placed in the therapeutic court program.**
 - Early Identification & Prompt Placement






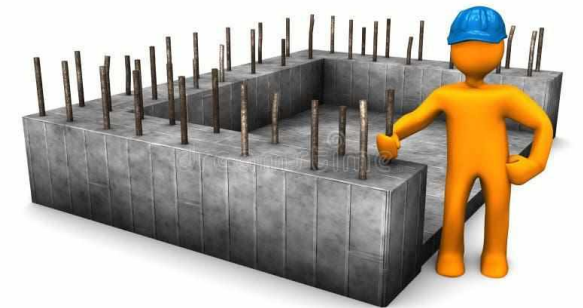
The Foundation

1. Courts integrate alcohol, drug, and other treatment services with justice system case processing.
2. Using a non-adversarial approach, prosecution and defense counsel promote public safety while protecting participants' due process rights.
3. **Eligible participants are identified early and promptly placed in the therapeutic court program.**
 - Early Identification & Prompt Placement
 - **Timely Intervention**






The Foundation

-  1. Courts integrate alcohol, drug, and other treatment services with justice system case processing.
-  2. Using a non-adversarial approach, prosecution and defense counsel promote public safety while protecting participants' due process rights.
-  3. **Eligible participants are identified early and promptly placed in the therapeutic court program.**
 - Early Identification & Prompt Placement
 - Timely Intervention
 - **Public Confidence & System Integration**



The Foundation

-  1. Courts integrate alcohol, drug, and other treatment services with justice system case processing.
-  2. Using a non-adversarial approach, prosecution and defense counsel promote public safety while protecting participants' due process rights.
-  3. Eligible participants are identified early and promptly placed in the therapeutic court program.

Questions:

- ***Are there any aspects of these Key Components you find hard to implement in your court?***
- ***What barriers, if any, do you face in the implementation of any of these components?***
- ***Are any of these components areas in which your court excels?***

The Structure




The Structure

-  4. Courts provide access to a continuum of alcohol, drug, and other related treatment and rehabilitation services.




The Structure

-  4. Courts provide access to a continuum of alcohol, drug, and other related treatment and rehabilitation services.
- Comprehensive, individualized care



The Structure

-  4. **Courts provide access to a continuum of alcohol, drug, and other related treatment and rehabilitation services.**
- Comprehensive, individualized care
 - **Team-based therapeutic approach**



The Structure

4. Courts provide access to a continuum of alcohol, drug, and other related treatment and rehabilitation services.
- Comprehensive, individualized care
 - Team-based therapeutic approach
 - **Proven effectiveness & cost savings**



The Structure

- 4. Courts provide access to a continuum of alcohol, drug, and other related treatment and rehabilitation services.
- 5. **Abstinence is monitored by frequent alcohol and other drug testing.**



The Structure

- 4. Courts provide access to a continuum of alcohol, drug, and other related treatment and rehabilitation services.
- 5. **Abstinence is monitored by frequent alcohol and other drug testing.**
 - **Frequent, Reliable Testing**



The Structure

- 4. Courts provide access to a continuum of alcohol, drug, and other related treatment and rehabilitation services.
- 5. **Abstinence is monitored by frequent alcohol and other drug testing.**
 - Frequent, Reliable Testing
 - **Clear Standards & Procedures**



The Structure

- 4. Courts provide access to a continuum of alcohol, drug, and other related treatment and rehabilitation services.
- 5. **Abstinence is monitored by frequent alcohol and other drug testing.**
 - Frequent, Reliable Testing
 - Clear Standards & Procedures
 - **Immediate Feedback & Accountability**



The Structure

- 4. Courts provide access to a continuum of alcohol, drug, and other related treatment and rehabilitation services.
- 5. Abstinence is monitored by frequent alcohol and other drug testing.
- 6. **A coordinated strategy governs the courts response to participant's compliance.**



The Structure

- 4. Courts provide access to a continuum of alcohol, drug, and other related treatment and rehabilitation services.
- 5. Abstinence is monitored by frequent alcohol and other drug testing.
- 6. **A coordinated strategy governs the courts response to participant's compliance.**
 - **Balanced Response System**



The Structure

- 4. Courts provide access to a continuum of alcohol, drug, and other related treatment and rehabilitation services.
- 5. Abstinence is monitored by frequent alcohol and other drug testing.
- 6. **A coordinated strategy governs the courts response to participant's compliance.**
 - Balanced Response System
 - **Supportive Approach to Recovery**



The Structure

- 4. Courts provide access to a continuum of alcohol, drug, and other related treatment and rehabilitation services.
- 5. Abstinence is monitored by frequent alcohol and other drug testing.
- 6. **A coordinated strategy governs the courts response to participant's compliance.**
 - Balanced Response System
 - Supportive Approach to Recovery
 - **Clear Communication & Consistency**



The Structure

- 4. Courts provide access to a continuum of alcohol, drug, and other related treatment and rehabilitation services.
- 5. Abstinence is monitored by frequent alcohol and other drug testing.
- 6. A coordinated strategy governs the courts response to participant's compliance.
- 7. **Ongoing judicial interaction with each court participant is essential.**



The Structure

- 4. Courts provide access to a continuum of alcohol, drug, and other related treatment and rehabilitation services.
- 5. Abstinence is monitored by frequent alcohol and other drug testing.
- 6. A coordinated strategy governs the courts response to participant's compliance.
- 7. **Ongoing judicial interaction with each court participant is essential.**
 - **Judicial leadership is central**



The Structure

- 4. Courts provide access to a continuum of alcohol, drug, and other related treatment and rehabilitation services.
- 5. Abstinence is monitored by frequent alcohol and other drug testing.
- 6. A coordinated strategy governs the courts response to participant's compliance.
- 7. **Ongoing judicial interaction with each court participant is essential.**
 - Judicial leadership is central
 - Ongoing interaction







The Structure

- 4. Courts provide access to a continuum of alcohol, drug, and other related treatment and rehabilitation services.
- 5. Abstinence is monitored by frequent alcohol and other drug testing.
- 6. A coordinated strategy governs the courts response to participant's compliance.
- 7. **Ongoing judicial interaction with each court participant is essential.**
 - Judicial leadership is central
 - Ongoing interaction
 - **Balanced accountability**



The Structure

-  4. Courts provide access to a continuum of alcohol, drug, and other related treatment and rehabilitation services.
-  5. Abstinence is monitored by frequent alcohol and other drug testing.
-  6. A coordinated strategy governs the courts response to participant's compliance.
-  7. Ongoing judicial interaction with each court participant is essential.

Questions:

- ***Are there any aspects of these Key Components you find hard to implement in your court?***
- ***What barriers, if any, do you face in the implementation of any of these components?***
- ***Are any of these components areas in which your court excels?***

Sustainability




Sustainability

-  8. Monitoring and evaluation measure the achievement of program goals and gauges effectiveness.



Sustainability

-  8. **Monitoring and evaluation measure the achievement of program goals and gauges effectiveness.**
- **Clear Goals & Accountability**



Sustainability

 8. **Monitoring and evaluation measure the achievement of program goals and gauges effectiveness.**

- Clear Goals & Accountability
- **Ongoing Monitoring**



Sustainability

8. Monitoring and evaluation measure the achievement of program goals and gauges effectiveness.

- Clear Goals & Accountability
- Ongoing Monitoring
- **Evaluation & Outcomes**



Sustainability

- 8. Monitoring and evaluation measure the achievement of program goals and gauges effectiveness.
- 9. **Continuing interdisciplinary education promotes effective court planning, implementation, and operations.**



Sustainability

- 8. Monitoring and evaluation measure the achievement of program goals and gauges effectiveness.
- 9. **Continuing interdisciplinary education promotes effective court planning, implementation, and operations.**
 - Ongoing interdisciplinary training builds collaboration



Sustainability

- 8. Monitoring and evaluation measure the achievement of program goals and gauges effectiveness.
- 9. **Continuing interdisciplinary education promotes effective court planning, implementation, and operations.**
 - Ongoing interdisciplinary training builds collaboration
 - **Professional development strengthens effectiveness**



Sustainability

- 8. Monitoring and evaluation measure the achievement of program goals and gauges effectiveness.
- 9. **Continuing interdisciplinary education promotes effective court planning, implementation, and operations.**
 - Ongoing interdisciplinary training builds collaboration
 - Professional development strengthens effectiveness
 - **Practical, structured education is essential**



Sustainability

- 8. Monitoring and evaluation measure the achievement of program goals and gauges effectiveness.
- 9. Continuing interdisciplinary education promotes effective court planning, implementation, and operations.
- 10. **Forging partnerships among the courts, public agencies, and community-based organizations generates local support and enhances court effectiveness.**



Sustainability

- 8. Monitoring and evaluation measure the achievement of program goals and gauges effectiveness.
- 9. Continuing interdisciplinary education promotes effective court planning, implementation, and operations.
- 10. **Forging partnerships among the courts, public agencies, and community-based organizations generates local support and enhances court effectiveness.**
 - Partnership Building



Sustainability

- 8. Monitoring and evaluation measure the achievement of program goals and gauges effectiveness.
- 9. Continuing interdisciplinary education promotes effective court planning, implementation, and operations.
- 10. **Forging partnerships among the courts, public agencies, and community-based organizations generates local support and enhances court effectiveness.**
 - Partnership Building
 - **Community Linkages**






Sustainability

- 8. Monitoring and evaluation measure the achievement of program goals and gauges effectiveness.
- 9. Continuing interdisciplinary education promotes effective court planning, implementation, and operations.
- 10. **Forging partnerships among the courts, public agencies, and community-based organizations generates local support and enhances court effectiveness.**
 - Partnership Building
 - Community Linkages
 - **Sustained Support**



Sustainability

-  8. Monitoring and evaluation measure the achievement of program goals and gauges effectiveness.
-  9. Continuing interdisciplinary education promotes effective court planning, implementation, and operations.
-  10. Forging partnerships among the courts, public agencies, and community-based organizations generates local support and enhances court effectiveness.

Questions:

- ***Are there any aspects of these Key Components you find hard to implement in your court?***
- ***What barriers, if any, do you face in the implementation of any of these components?***
- ***Are any of these components areas in which your court excels?***

Applying the 10 Key Components Across Therapeutic Court Models

- Mental Health Courts
- Veterans Treatment Courts
- Family Treatment Courts
- Community Courts
- DUI Courts (10 Guiding Principles)
- Tribal Wellness Courts
- Other Courts

Applying the 10 Key Components Across Therapeutic Court Models

- Mental Health Courts
- Veterans Treatment Courts
- Family Treatment Courts
- Community Courts
- DUI Courts (10 Guiding Principles)
- Tribal Wellness Courts
- Other Courts

Questions:

- *Which component feels the most difficult to adapt in your specific type of therapeutic court – and how have you tried to address it?*

Question:

Which component feels the most difficult to adapt in your specific type of therapeutic court – and how have you tried to address it?

The 10 Key Components

1. Integrated Treatment & Justice
2. Non-Adversarial Approach
3. Early Identification
4. Access to Treatment
5. Frequent Testing
6. Coordinated Strategy
7. Ongoing Judicial Interaction
8. Monitoring & Evaluation
9. Interdisciplinary Education
10. Community Partnerships

We are all working for the same purpose from the same guiding structure.



Questions?



- Therapeutic courts are a community investment in justice, not just an alternative to incarceration

AOC Behavioral Health Team

Contact Info:

Tessa Clements, Behavioral Health
Program Manager

Tessa.Clements@courts.wa.gov

TJ Grace, Program Specialist (CLJTC)

TJ.Grace@courts.wa.gov

Alex Donnici, Program Specialist (SIM)

Alexandra.Donnici@courts.wa.gov

Adam Pithan, State Therapeutic Court
Coordinator

Adam.Pithan@courts.wa.gov

Ginnava Hooft, Program Analyst (DUI)

Ginnava.Hooft@courts.wa.gov

Leah Niccolocci, Program Analyst
(CLJTC)

Leah.Niccolocci@courts.wa.gov

Marina Richardson, Program Analyst
(CLJTC)

Marina.Richardson@courts.wa.gov

- Therapeutic courts are a community investment in justice, not just an alternative to incarceration